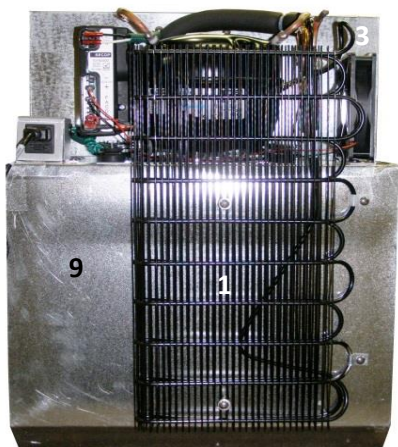




### Front View

- 1) Frame 19 c/w frame screw (12), frame gasket
- 2) Door 19 c/w , bottle bar, door gasket 19, door pad 19, panel (black) \*Not Shown\*, door rod
- 3) Hinge Assembly c/w hinge bearing, hinge left, hinge right, hinge pin (2), hinge screw (12)
- 4) Thumb Latch c/w thumb latch, latch pin, latch tension
- 5) Shelf 19 c/w shelf clips (2)
- 6) Thermostat Plus c/w knob, case, wire 45 (grey)
- 7) Evaporator 19 c/w capillary tube, suction line, armaflex
- 8) Drip Tray 19
- 9) Latch 75 c/w male & female ends, screws (4)
- 10) Accessory Bag c/w ice cube tray, manual, mounting hole plugs (4) \*\*Not Shown\*\*



### Back View

- 1) Condenser 19 c/w mounting clips & screws
- 2) Pipe Cover
- 3) Base 26 c/w screws
- 4) bd3.5f Compressor c/w rubber feet (4), compressor clip (4)
- 5) Fridge Drier
- 6) Electronic AC/DC\* c/w red wire 11, black wire 11
- 7) AC Receptacle c/w fuse 4, wire harness
- 8) AC Cord 115 optional 220
- 9) Cabinet 19
- 10) Fan Assembly c/w fan12, fan bracket
- 11) Speed Resistor (Optional) No resistor=low speed, black resistor=medium speed, red resistor=high speed



### Base Expanded View

#### Notes:

- \* DC models electronic 2000 replaces electronic AC/DC